


Lineup

Scan the QR code to view the product list
<https://www.rental.co.jp/product/railway/>



Railway vehicle Step-Lift (FRP type) Mega Step & Step Lock
 Product code: TMGST / TSTLK Developed in 2025



Portable Railway Use Yellow-red LED Signal Light
 Product code: TLYRN Developed in 2025



Lightweight Platform Door Cover (single-sided type)
 Product code: TFDKH Developed in 2025



Railway Tunnel Inspection Lift Exchangeable Battery Type
In-development



2024

2023

2022

2021

2020

2019

2014






In-development

In-development

In-development

2024

2023

2022

2021

2020

2019

2014



Nationwide Railway Construction Machinery Centers


Center Name	Address
Tomakomai Sales Office	10-1 Ippommatsu-chō, Tomakomai-shi, Hokkaidō
Morioka Machinery Center	324 Dai-5-Jiwari, Hiromiyasawa, Yahaba-chō, Shiwa-gun, Iwate-ken
Tohoku Railway Service Workshop	26-2 Kikyodaira, Ohira-mura, Kurokawa-gun, Miyagi-ken
Kantō Railway Service Workshop	407-1 Matsuhidai, Matsudo-shi, Chiba-ken
Railway Development Department	19th Floor, Tokyo Shiodome Building, 1-9-1 Higashi-Shimbashi, Minato-ku, Tokyo
Kantō Railway Branch Office	6th Floor, KDX Takanawadai Building, 3-5-23 Takanawa, Minato-ku, Tokyo
Tokyo Railway Sales Office	6th Floor, KDX Takanawadai Building, 3-5-23 Takanawa, Minato-ku, Tokyo
Yokohama Railway Sales Office	7F Sankyo Yokohama Building, 5-85 Chōjamachi, Naka-ku, Yokohama-shi, Kanagawa-ken
Ueno Railway Sales Office	3F K3 Building, 1-27-1 Taitō, Taitō-ku, Tokyo
Tama Machinery Center	6-3-5 Suwa, Tama-shi, Tokyo
Joetsu Sales Office	152-1 Kamiyoshi, Kubiki-ku, Joetsu-shi, Niigata-ken
Fujieda Sales Office	6-1 Hyōdayū, Fujieda-shi, Shizuoka-ken
Aichi Machinery Center	1132-8 Nishikamegu, Gomyo-chō, Yatomi-shi, Aichi-ken
Kobe Machinery Center	4-6 Minatojima, Chūō-ku, Kobe-shi, Hyōgo-ken
Higashi-Hiroshima Machinery Center	918-1 Hiyama, Takaya-chō, Higashi-Hiroshima-shi, Hiroshima-ken
Kyushu Machinery Center	1571-1 Sonezaki-machi, Tosu-shi, Saga-ken

Nationwide Railway Construction Machinery Centers

Tomakomai Sales Office	10-1 Ippommatsu-chō, Tomakomai-shi, Hokkaidō	Ueno Railway Sales Office	3F K3 Building, 1-27-1 Taitō, Taitō-ku, Tokyo
Morioka Machinery Center	324 Dai-5-Jiwari, Hiromiyasawa, Yahaba-chō, Shiwa-gun, Iwate-ken	Tama Machinery Center	6-3-5 Suwa, Tama-shi, Tokyo
Tohoku Railway Service Workshop	26-2 Kikyodaira, Ohira-mura, Kurokawa-gun, Miyagi-ken	Joetsu Sales Office	152-1 Kamiyoshi, Kubiki-ku, Joetsu-shi, Niigata-ken
Kantō Railway Service Workshop	407-1 Matsuhidai, Matsudo-shi, Chiba-ken	Fujieda Sales Office	6-1 Hyōdayū, Fujieda-shi, Shizuoka-ken
Railway Development Department	19th Floor, Tokyo Shiodome Building, 1-9-1 Higashi-Shimbashi, Minato-ku, Tokyo	Aichi Machinery Center	1132-8 Nishikamegu, Gomyo-chō, Yatomi-shi, Aichi-ken
Kantō Railway Branch Office	6th Floor, KDX Takanawadai Building, 3-5-23 Takanawa, Minato-ku, Tokyo	Kobe Machinery Center	4-6 Minatojima, Chūō-ku, Kobe-shi, Hyōgo-ken
Tokyo Railway Sales Office	6th Floor, KDX Takanawadai Building, 3-5-23 Takanawa, Minato-ku, Tokyo	Higashi-Hiroshima Machinery Center	918-1 Hiyama, Takaya-chō, Higashi-Hiroshima-shi, Hiroshima-ken
Yokohama Railway Sales Office	7F Sankyo Yokohama Building, 5-85 Chōjamachi, Naka-ku, Yokohama-shi, Kanagawa-ken	Kyushu Machinery Center	1571-1 Sonezaki-machi, Tosu-shi, Saga-ken

NIKKEN CORPORATION
 TOKYO SHIODOME BUILDING, 9-1, HIGASHISHIMBASHI 1-CHOME, MINATO-KU, TOKYO, 105-7319, JAPAN
 TEL: 81-3-6775-7811 E-mail: nikken@rental.co.jp

Click here for the HP



No. **S-2951-2**
 PR260420-000e

Railway Machines Line UP

vol.8



History of Railway Construction Machinery Development

Nikken History.

- Nikken Developed Machine for Sales
- Nikken Developed Machine for Rental
- Joint-Developed Machine
- Joint-Developed Machine with heavy machinery manufacturer

1981 Railway overhead line inspection vehicle (scissor lift type)

1983 Railway overhead line inspection vehicle (X-type)

1989 2-ton 3-way dump truck for railway use

1991 Railway hydraulic excavator 0.25 m³ (wheel type, model PW60)

1992 Railway hydraulic excavator 0.18 m³ (steel wheel drive, model SK45)

1994 Railway hydraulic excavator "Yumbo Magic" (steel wheel type)

2000 3-ton 3-way dump truck (Type 3) for railway use

2008 3-ton 3-way dump truck (EN type) for railway use

2010 Railway movable bracket assist vehicle

Latest Product

3-ton flatbed truck for railway use
 Standard cab, automatic transmission, with power gate
 Product code: T3HBRPWN Developed in 2024

Railway automatic brake device
 Product code: TSKS Developed in 2018

Lightweight derailment recovery half-sleeper II
 Product code: THAN2 Developed in 2025

Lightweight mat for railway crossings
 Product code: KMFK / KMFV Developed in 2018

8-ton crawler crane for railway use
In-development

Railway lightweight slope
 Product code: TKSP Developed in 2022

2011

2010

2013

2014

2019

2020

2021

2022

2023

2024

2025

Other Railway Products

Railway platform slope

New product



Subway Platform Stage & Platform Tower



Aluminum light-duty trolley (1-ton capacity)



Aluminum Tower Cart



Two-person conductor's podium



Railway Dump Truck

3-ton 3-way dump truck (Type 6) for railway use



3-ton 3-way dump truck (Type 5) for railway use [Low-floor specification / Automatic turntable specification]



Railway crane truck

New model railway column-type heavy material carrier



3-ton truck with crane (Turntable Type 3) for railway use



Railway Use Aerial Work Vehicles and Machines

Railway high-platform work vehicle (9.9 m)



Railway side work platform



Railway boom lift (crawler type)



Railway over-fence platform

In-development



Nikken Corporation
Rental Products

Railway Use Aerial Work Vehicles and Machines

Railway high-platform work vehicle (15 m)



Railway high-platform work vehicle (12.1 m)



Railway full-rotation lifter (9.9 m, model U565)



Railway Full-rotation lifter (9.9 m, model AT-100SDW)



Railway high-platform work vehicle (17.4 m)



Railway Crawler Cranes

Railway crawler crane, 8.0-ton lifting capacity (model ZX160LCT)



Railway crawler crane, 4.9-ton lifting capacity Small swing, heavy-weight type (model CK110URT-3)

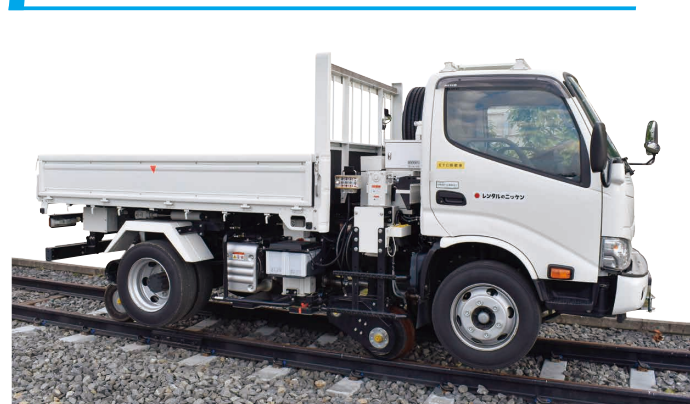


Railway Flatbed Truck

3-ton railway flatbed truck (wide cab)



3-ton railway flatbed truck (standard cab)



3-ton flatbed truck for railway use Wide cab, with power gate



9-ton flatbed truck for railway use (mounted on 14-ton chassis)

3-ton flatbed truck for railway use Double cab, with power gate



Nikken Corporation
Rental Products

Excavators for Railway Use

Railway hydraulic excavator 0.2 m³, ultra-short swing type with crane (model PC58UUT-6)



Railway hydraulic excavator 0.2 m³, ultra-short swing type with crane (model SK50URT-6E)



Railway hydraulic excavator 0.25 m³, ultra-short swing type with crane (model PC78UUT-10)



For details please scan the QR on the back or contact us

※Specifications and warranty details are subject to change without prior notice.※Product appearance, specifications, dimensions, weight, and load capacity may vary slightly depending on the model or production year.※Railway machinery will be delivered to and collected from our Railway Service Workshops or Railway Machinery Centers. Transportation costs from each Service Workshop or Center will be borne by the customer.